



300N Wireless Extender

**Quick Start
Guide**

Start here!

Before you start, check that these items are in the box.

Item Name	Quantity
300N Wireless LAN Extender	1
Network Cable	1
Quick Start Guide	1

Contents

Welcome to iiNet's Wireless Extender	2
List of Features	3
System Requirements	6
Getting Ready	6
Setting up your Wireless Extender	8
Step 1 – Select the Wireless Mode	8
Step 2 – Plug in the Extender	9
SECTION A	
Step 3 – Setup via WPS (recommended)	10
SECTION B	
Step 4 – Setup without WPS	14
Step 5 – Connect your Computer to the Extender	16
Step 6 – Secure the Extender in your Wireless Network	17
Step 7 – Secure your Wi-Fi Access	20
Step 8 – Save the Extender URL	22
Extender LED – Status Lights Behaviour	26



Welcome to The iiNet Wireless Extender

Hi,

You're now the proud owner of an iiNet 300N Wireless LAN Extender. As the name suggests, this nifty device expands your wireless and Wi-Fi reach in and around your home. It wirelessly connects to your existing modem and gives your signal a boost while reducing 'deadspots' – areas where your Wi-Fi devices are unable to connect due to a weak signal.

All you need to do is plug your Extender into a power-point that's near the limit of your current wireless signal range, use this guide to setup the device and then you'll be able to enjoy a stable network connection from the ground floor of your home through to the attic, and even in the garden.

Use this Quick Start Guide to get your Extender up and running.

List of Features



Five status lights indicate

- **Signal** – a wireless signal
- **WLAN (Wireless Local Area Network)** – a wireless connection to your modem
- **Power** – Extender receiving power after it's plugged into a power-point
- **WPS (Wi-Fi Protected Setup)** – for setting up a secure wireless connection
- **LAN (Local Area Network)** – indicates a connection to a PC via a cable.

WPS button – when pressed, will kick-start the secure wireless connection.

See page 26 for an explanation of the Extender's LED status lights behaviour.



Three-position mode switch

AP – turns your wired modem into a Wi-Fi modem

Repeater – boosts and extends the range of your wireless signal

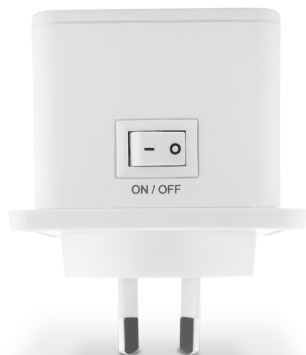
Client – turns your computer (PC) into a Wi-Fi PC

Learn more about the AP and Client modes in the User Manual available for download at iinet.net.au/wireless-extender



LAN Port

To plug in a cable to connect to a computer, switch or hub for local network sharing using Wi-Fi.



ON / OFF switch

After you plug the Extender into a power-point and switch it on, press this switch to the ON position.

The Power status light (on the front of the Extender) should illuminate.

System Requirements

Check that you have the following computer system requirements for the setup:

- **A wireless network card compatible with 802.11b/g/n wireless network standard**
- **Windows 2000, 2003, XP, Vista, 7 or 8 operating system or Mac OSX 10.5 or later.**
- **CD-ROM drive**
- **At least 100MB of available disk space**

Getting Ready

First, you need to have **two unique numbers** ready to input during the installation process. So make a note of them now before you start.

Your modem's Wi-Fi password

This is your modem's wireless security key/password, it is noted on a sticker on the back of your modem, or underneath it (this is the same security key you use to let your laptop connect to the modem). On the iiNet modems (e.g. Budii Lite®) this sticker is on the base. Write down the WPA number:

My WPA number/wireless security password is _____

Your Extender's MAC address

This is a hardware identification number that uniquely identifies each device on a network. Write down the last four digits of this number. You'll find the MAC number on a sticker on the Extender. It looks like this:



The last 4 digits of the Extender's MAC address are _____

Please keep these numbers somewhere safe once you've set up your Wireless Extender.



The computer screen shots in this Guide are from a Windows 7 and a Windows XP operating system. If your operating system is one of the other versions supported, your screens will look slightly different.

Setting up your Wireless Extender

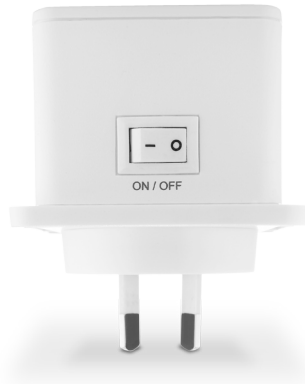
Step 1 – Select the Wireless Repeater Mode



The Wireless Extender has a three-position mode switch.

- Position the switch to the Repeater position (to extend the range of your current wireless signal).

Step 2 – Plug in the Extender



Locate a power-point that is within three meters (10 feet) of your existing modem/router.

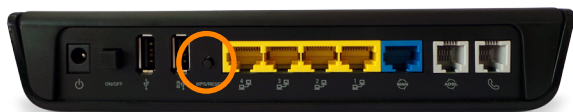
- Plug the Extender into the power-point and turn it on.
- Under the Extender is an ON/OFF switch. Switch it to the ON position.
- The Power status light (on the front of the Extender) should come on and remain steady.

A

Step 3 – Setup via WPS (Recommended)

Check the back and sides of your modem to see if it has a WPS button.

If your modem does NOT have this WPS button or feature, skip this step and go to **page 14**.



Standard modem



Budii Lite®

- a. On the front of the Extender is a WPS button. Press and hold this button for two seconds and release.

CAUTION: If you press the WPS button for longer than five seconds, it may reset to factory settings.

- b. Within two minutes of pressing the WPS button on your Extender, press the WPS button on your modem for two seconds then release.
- c. Wait for up to two minutes while the modem and the Extender talk to each other and exchange their security settings.
- d. After a couple of minutes check that the WPS status light has illuminated. This means the WPS connection was successful. This light will remain illuminated and shortly afterward the orange Signal light should illuminate.
- e. If the WPS status light flashes quickly, the connection was unsuccessful. Wait until the WPS status light goes off, then repeat Step 3 until the WPS Status light remains stable.

When the connection is complete, the following status lights will show:

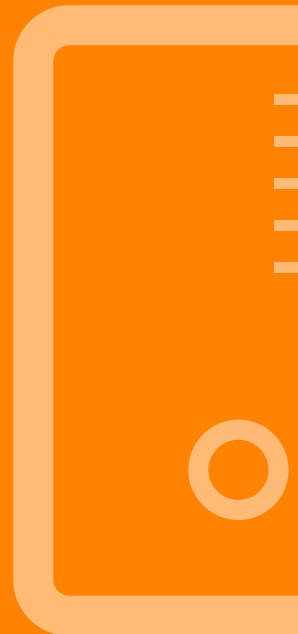
Signal	amber light remains steady
WLAN	light flashes
Power	light is steady

Congratulations

You have successfully set up your Wireless Extender. Simply connect your PC or wireless devices to your wireless connection. You can now unplug your Extender and move it to any power point in your home that's within range of your modem's Wi-Fi network. You'll see the amber Signal light illuminate if the Extender is successfully extending your Wi-Fi network.

The following indicates the range of your wireless network:

Amber light	steady light and always on	exceptional signal reception (50-100%)
Amber light	slow blinking	good signal reception (50%-5%)
Amber light	fast blinking	Poor signal reception (<25%), you are starting to reach the outer limits of your extended network range.



Wireless Portability

Now that you've setup and connected the Extender, you're free to expand your wireless range beyond your current limit.

You can surf the Internet from spots where the signal used to be too weak, or other places in your home you never thought possible.

For Advanced settings, other features of this Wireless Extender and a Glossary see your User Manual at iinet.net.au/wireless-extender

B

THIS SECTION IS TO SET UP YOUR iiNet WIRELESS EXTENDER IF YOUR MODEM DOES NOT HAVE WPS

Step 4 – Setup without WPS

Open your computer's Wireless Device Manager.

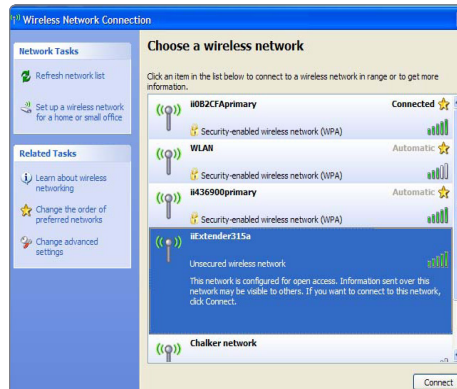
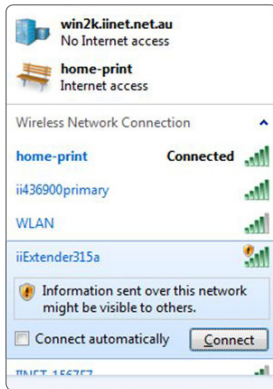
The icon could look similar to any of these icons circled:



It appears in your system tray (bottom right hand corner of your screen). If you're unsure you can hover your mouse over each icon in the system tray. A balloon text appears identifying the nature of the icon.

- If Wireless Device Manager is not in your system tray, you can access it through Control Panel (under your Windows Start button menu). Alternatively, consult your PC manual for help on how to launch your wireless feature on your PC.

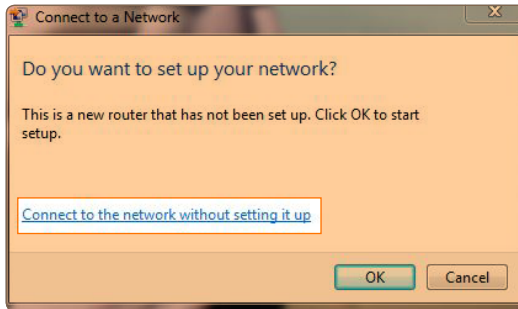
- Click the icon to open the Wireless Device Manager. You may need to right click the mouse and select 'View Available Wireless Networks'. It will display your wireless signal strength. That part of the screen will look similar to this:



- You should be able to see the name of your modem as well as the name of the extender.
- Your Extender is identified as iiExtenderxxxx, which includes the last four digits of your MAC serial number (which you wrote down earlier).
- You might need to refresh the Wireless Device Manager's screen to see your Extender.

Step 5 – Connect your Computer to the Extender

- Click the iiExtenderxxxx name in your list of wireless networks and press Connect. Your Wireless Device Manager should display that you are now connected to the Extender.
- Depending on your version of Microsoft Windows, you might see a window that looks like this, if so, click '**Connect to the network without setting it up**'.



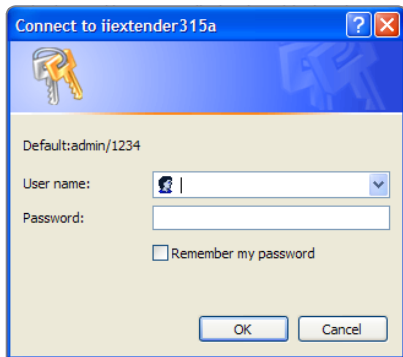
If you see a warning message, click '**CONNECT ANYWAY**'.

Step 6 – Secure the Extender in your Wireless Network

- Open up your web browser (e.g. Firefox, Internet Explorer).
- In the address bar, type: `http://iiExtenderxxxx`
(remember the xxxx stands for the last four digits of your Extender's MAC serial number which you wrote down earlier). You can also type in `192.168.2.254` in the address bar of your browser. This will be necessary if you are using a MAC computer.

If you're using Safari as your web browser you'll more than likely need to type in the URL `192.168.2.245`.

- Press **ENTER**.



- A Windows Security login opens up and you can now enter the Username and Password.
- Enter the default username admin and the default password 1234.
- Click **OK**.

The **Universal Repeater – Quick Setup** page opens showing all the wireless modems/routers within range.

Quick Setup

This quick setup page helps you to install this repeater and extend your wireless connection throughout your home. The list below shows you the wireless networks in your vicinity, please select the wireless network you want to extend in range and click the 'next' button to continue the setup process. If the wireless network name you want to extend does not appear in this list then please click 'Refresh'. If the name still does not appear please move the wireless extender closer to your broadband modem.

If your wireless network name (SSID) is hidden you can enter the name manually by placing a tick in the box below and typing the name of your wireless network in the dialogue box below.

Select	SSID	Channel	Encryption	Signal
<input type="radio"/>	home-print	6	WPA-PSK/WPA2-PSK	81
<input type="radio"/>	ii436900primary	6	WPA2-PSK	80
<input type="radio"/>	ii071100primary	1	no	74
<input type="radio"/>	WLAN	6	WPA-PSK/WPA2-PSK	64
<input type="radio"/>	Chalker network	1	WPA-PSK/WPA2-PSK	60

The name of your own modem or router will be listed in the SSID column. This is the name of the wireless network in your home. (If the modem or router you want to connect the Extender to doesn't appear, click the Refresh button.)

- Click the Select circle in the same row as your modem listed in the SSID column at the top of the screen.
- Click the **NEXT** button to continue.

Step 7 – Secure your Wi-Fi Access

The Security page opens:

- Enter your modem's wireless security key (also known as the WPA key). This is the key you wrote down before getting started.
- Click **NEXT**.



The screenshot shows a web interface titled "Quick Setup". At the top, there are two buttons: "Back" and "Next". Below the buttons is a paragraph of instructions: "Please enter the wireless security key into the box below. This key is the security key on your existing modem/router. If you are unsure what the key is please check the stickers on your modem; the WPA key may be indicated on a sticker or tag on the outside of your modem. This is the same key that you may have entered in your laptop in order to gain internet access in the past". Below this text is a label "KEY:" followed by a text input field containing the placeholder text "enter wireless security key here".

- Wait while the security between your modem and the extender take a minute to talk to each other.

Wireless security key is been verified, please wait for approximately 2 minutes...

during this process your computer may disconnect from the your Wireless Extender, if this happens please reconnect to this wireless extender using the default wireless SSID of "iEExtender315a"



- When the WPA key has been verified you will see the following page.

Quick Setup

NEXT



Success

key is correct, please click "Next" button to continue.

- Click **NEXT**.

Step 8 – Save the Extender URL

Save settings successfully!

Connected Access Point SSID : **home-print**

Repeater SSID :

Security : **WPA2-shared key**

Add the URL to your bookmark(my favorite list): **http://iiExtender315a**

(We recommend that you save this URL for quick access to the Wireless Extenders Web page)

(URL save option is only supported if you are using internet explorer or Firefox web browsers)

Press Apply button to save settings

- You can save the Universal Extender URL – <http://iiExtenderxxxx> to your Internet browser's Favourites. This will enable you to log into the extender at a later stage if you want to access its advanced features.
- Click on **APPLY** if you want to save the URL of the extender, or click **CONTINUE** if you don't.



This function for saving the extender URL is only supported with Internet Explorer and Firefox. If you use another browser, you will need to make a note of this URL and enter it manually or enter the digits 192.168.2.254 in your web browser address.

Once you click on **APPLY** or continue you will see a screen similar to this:

Please wait for a few minutes whilst the system restarts...

26%



When the reboot is complete, the following status lights will show:

Signal

amber light remains steady

Please see the guide at the back of this guide that explains the signal strength between the wireless extender and your modem.

WLAN

light flashes

Power

light is steady

Congratulations

You have successfully set up your Wireless Extender. Simply connect your PC or wireless devices to your wireless connection. You can now unplug your Extender and move it to any power point in your home that's within range of your modem's Wi-Fi network. You'll see the amber Signal light illuminate if the Extender is successfully extending your Wi-Fi network.

The following indicates the range of your wireless network:

Amber light	steady light and always on	exceptional signal reception (50-100%)
Amber light	slow blinking	good signal reception (50%-5%)
Amber light	fast blinking	Poor signal reception (<25%), you are starting to reach the outer limits of your extended network range.



Wireless Portability

Now that you've setup and connected the Extender, you're free to expand your wireless range beyond your current limit.

You can surf the Internet from spots where the signal used to be too weak, or other places in your home you never thought possible.

For Advanced settings, other features of this Wireless Extender and a Glossary see your User Manual at iinet.net.au/wireless-extender

Extender LED – Status Lights Behaviour

Status Light	Behaviour	Description
Signal	Steady ON	Excellent signal reception (100% -50%).
	Blinking	Slow blinking: Good signal reception (50%-25%) Fast blinking: Poor signal reception (<25%), you are starting to reach the outer limits of your extended network range.
	Off	Out of signal /disconnected/ or LED off mode. You will have to move the Extender closer to the modem.
WLAN	Blinking	Wireless function is active (transferring or receiving data)
	Off	Wireless network is switched off, or LED 'repeater' mode is in the off mode.
Power	Steady ON	Power is turned ON and Extender is receiving power from power-point.
	Slow Blinking	Ready for 'Reset to factory default'.
	Off	Power is turned off.

Status Light	Behaviour	Description
WPS	Steady ON	When WPS connection is successful, this light remains on for up to 5 minutes and then fades out.
	Blinking	The Extender is waiting for another modem device's connection, (Blink rate: 0.2 second on, 0.1 second off – for 2 minutes).
	Fast blinking	WPS error (Blink rate: 0.1 second on, 0.1 second off)
	Off	NO WPS is in progress/ or LED off mode.
LAN	Steady ON	LAN port is connected.
	Blinking	LAN port is active (transferring or receiving data).
	Off	LAN port is not connected/ or LED off mode







To contact our friendly support staff call:

iiNet Support

Available 24/7
13 22 58
support@iinet.net.au

Westnet Support

Available 24/7
1300 786 068
support@westnet.com.au

Internode Support

13 66 33
support@internode.on.net

TransACT Support

13 30 61
support@transact.com.au

Adam Internet:

1300 002 326
support@adam.com.au



Manual download - iinet.net.au/wireless-extender