

# piix



## Quick Start Guide

**iinet**  
connect better

# CONTENTS

<b>Precautions and General Care</b>	<b>3</b>	Change Slideshow Display Style	<b>15</b>
<b>About</b>	<b>5</b>	Delete a Photo	<b>16</b>
Installation Pack Items	5	Set Date and Time	<b>16</b>
Features	6	Update the Digital Photo Frame	<b>16</b>
- Front Panel	6	<b>Appendix</b>	<b>17</b>
- Back Panel	7	FAQs	<b>17</b>
<b>Getting Started</b>	<b>8</b>	Technical Specifications	<b>18</b>
Install a SIM card	8		
Install a Memory Card	9		
Switching on Piix	10		
Using the photo frame stand	11		
<b>How to use Piix</b>	<b>12</b>		
Home Menu Options	12		
Navigation	13		
Send Photos from your mobile phone	14		
Select Photos to display in Slideshow	14		
Change Photo Orientation	15		
Customise Slideshow Effects	15		



## Precautions and General Care

To use Piix correctly and safely, please read these precautions and observe them when using the device.  
(Unless otherwise specified, the term “device” refers to the Piix photo frame and its accessories.)

### USING Piix SAFELY

Before connecting Piix, plug the power extender into the back of the device then into a power-point. Turn the power point switch ON, followed by the power switch on the back of the device

- Before disconnecting Piix from the power supply, switch to OFF on the back of the device, then switch off at the power-point.
- When using Piix, ensure that your hands are dry and keep the device away from sources of heat such as a heater, stove top or a candle.
- Keep Piix far from electronic appliances that generate strong magnetic or electric fields, such as a microwave oven or a refrigerator.
- Place Piix on a stable and level surface at all times.
- Place Piix in a cool and well-ventilated indoor area. Do not expose the device to direct sunlight or places with high humidity.
- Use the device Piix in an area with a temperature ranging from 0°C to 40°C.
- Do not block the openings on Piix with any object. Keep a minimum clear space of 10 cm around the device for heat dissipation.
- Do not place any object (such as a candle or a water container) near Piix. If any foreign object or liquid enters the device, stop using the device immediately, switch it off, remove all the cables connected to it.
- During electrical storms, switch off Piix at the power source, to prevent damage due to power surges.
- Keep Piix and its accessories out of the reach of small children and pets.
- Do not store or transport Piix in the same box as inflammable liquids, gases, or explosives.



## ACCESSORY REQUIREMENTS

- Use only the accessories supplied. Otherwise, the performance of Piix may get affected including the warranty for the device.
- Do not use the power adapter if its cable is damaged.
- Ensure that the power adapter meets the specifications indicated on Piix nameplate.

## GENERAL CARE

- During storage, transportation, and operation of Piix, keep it dry and in a place where it can't collide with other objects.
- If there's a fault, do not dismantle the device. Contact an iiNet support centre for assistance.
- Do not attempt to change the mechanical, safety, or performance design of Piix.
- If Piix is not being used for a long time, disconnect it, and remove it from the power source.
- If Piix emits any smoke or unusual sound or smell, stop using the device immediately, switch it off, remove all cables connected to it.
- If Piix's screen is broken or damaged by colliding with hard objects, do not touch or try to remove the broken part. In this case, stop using the device immediately.
- Do not trample, pull, or over-bend any cable, particularly the flap covering the memory stick and SIM card insertion points.
- Only clean the surface area of the device Piix and switch off before you do.
- Use a clean, soft, and dry cloth to clean the device covering Piix. Use a quality display cleaner to clean the screen.

## DISPOSAL

- Do not dispose of Piix and the accessories in a garbage bin.
- Dispose of them according to local regulations on disposal of electronic devices and equipment.



## Getting to know Piix

Thank you for choosing the iiNet 3G Digital Photo Frame – Piix.

### INSTALLATION PACK ITEMS

Before you start using Piix, check you have the following items:

Digital Photo Frame	1
Power adapter	1
Quick Start	1
Welcome letter with SIM card	1

#### NOTE:

If the articles contained in your product package do not match those in the packing list, contact iiNet.



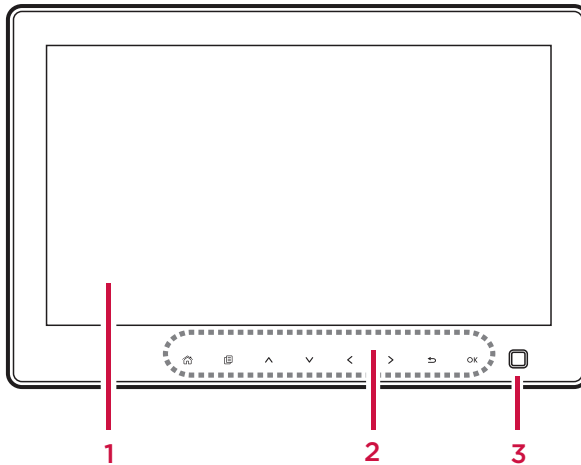
## FEATURES

Piix has a sleek and bright appearance for displaying in your home. It's a quality device that displays high resolution images. When you're out and about, you can share your special moments with family and friends at home by sending Piix a multimedia message from a mobile phone.

Piix also supports external SD/SDHC memory cards. A memory card can be inserted into the photo frame (next to the sim card insertion point at the back).

Piix also has other features available from the Home menu.

### FRONT PANEL



**1** Image screen

**2** Navigation key bar - navigation icons

**3** Movement detection sensor -







The photo frame has a detector for human presence and will power down when no one is in the room - clever!



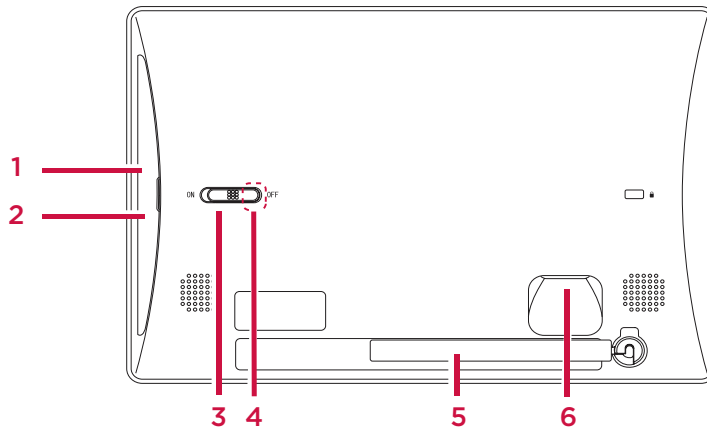
## FRONT PANEL - KEY AREA LED ICONS

To display the Home menu, tap the **navigation key bar**. The backlight turns on to display the menu icons. The menu icons always power down after use so remember to tap the navigation key bar to light up the icons. Make your selection by tapping the LED menu icon. The function of each is described below.

The functions of the LED icons in the navigation key bar are:

-  Displays the Home page menu.
-  Displays or hides the menu – context-sensitive menu displays when in **File Manager** or **Slideshow** options.
-  Move up or down to highlight an item.
-  Move left or right to highlight an item, or switch to the previous or next image.
-  Return to the previous screen or left pane.
-  Confirm your selection before changing the settings.

## REAR PANEL



- 1 SD/SDHC memory card slot
- 2 SIM card slot
- 3 Power button
- 4 Power indicator
- 5 Support stand
- 6 Power lead plug



## Getting started

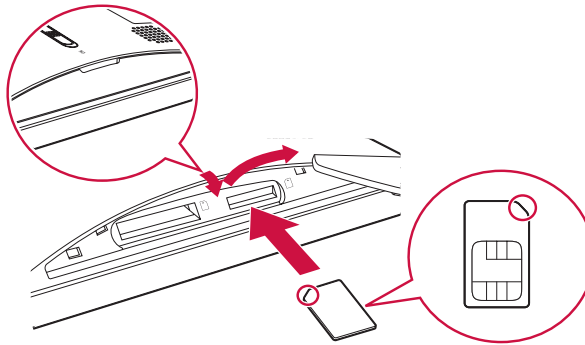


Before you plug in Piix, you need to insert the SIM card.

### INSTALL A SIM CARD

Turn Piix over to the back. Open the card slot cover flap. Be careful not to pull it right off as it's joined at one end by a rubber string (see diagram).

There is an embossed outline of a sim card on the cover flap which shows you what end you need to insert. The sim card chip should be face down. Push the edge of the sim card in gently, until you hear a click sound. Replace the cover flap and click into place.



#### NOTE:

To remove the SIM card, gently push the card further into the slot and then release it. The SIM card ejects from the slot and sticks out about 2 mm. You can then remove the card.






## INSTALLING A MEMORY CARD

Detach the SD/SDHC memory card cover flap behind the device. Do not pull it off as it's attached at one end by a plastic rubber. The embossed image on the device shows the orientation the card should be in before you insert it.

Insert the memory card into the memory card slot. Push it firmly until it clicks into position. Switch on the power, first at the power-point then on the back of Piix. Piix may automatically display the images stored on the card.

To display images on the memory card:

1. Touch  to go to the home screen.
2. Select **File Manager**. Select the **SD Card** folder to view contents of memory card.

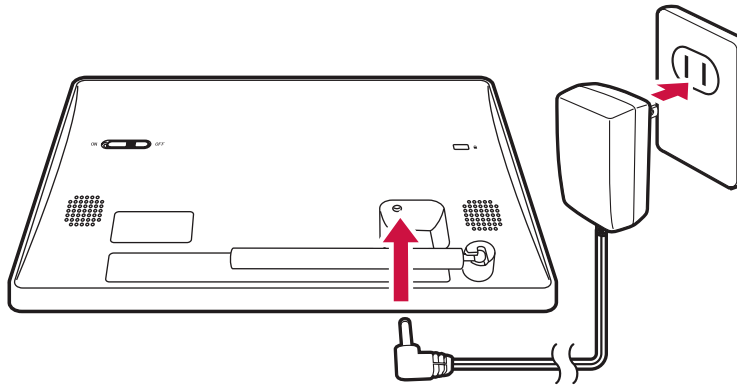
### NOTE:

To remove the memory card, gently but firmly push the card further into the slot and then release it. The card ejects, sticking out about 2 mm. You can then remove it.



## SWITCH ON Piix

To attach the power cord and plug, first insert Piix's plug end into the device as shown in the image. The plug-in point is in a vertical position inside the inset above the folded frame stand. Next, plug the power-point into a socket. Slide the power switch on Piix to "ON" position and switch on the power-point.



### NOTE:

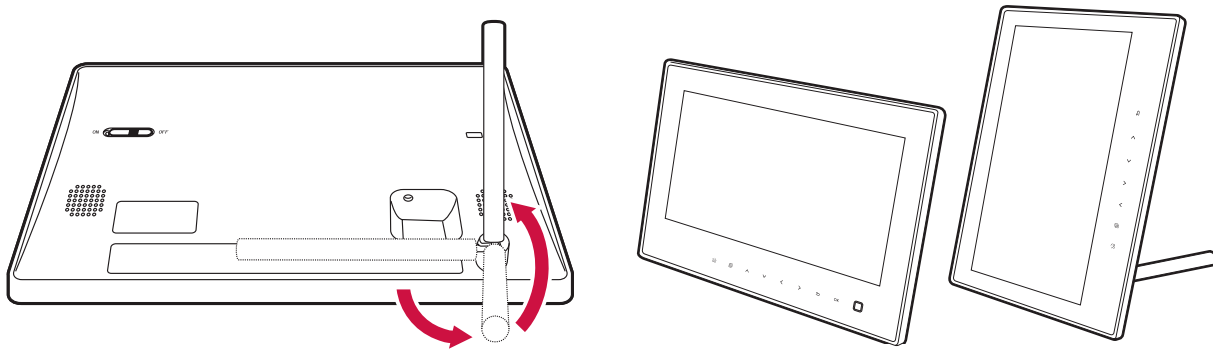
Piix does not use batteries. It must always be plugged into a power-point.



## USE THE PIIX STAND

Piix has a swing-arm stick at the back which is used as a support stand (see diagram). You can place the photo frame on a surface in portrait or landscape orientation.

As shown in the following figure, rotate the support stand clockwise to set it up.



### NOTE:

Piix supports a gravity sensor. If you rotate the digital frame, the image displayed also rotates accordingly.



## How to use Piix

### HOME MENU OPTIONS



In the **navigation key bar**, tap the  icon to see the following options.

<b>Slideshow</b>	displays your photos and pictures as a procession.
<b>Photos</b>	displays tiled images of your photos and pictures.
<b>MMS</b>	displays all multi-media messages received.
<b>Music</b>	displays tiled images of music files.
<b>Videos</b>	displays tiled images of video files.
<b>File Manager</b>	displays folders containing photos and image types.
<b>Alarm Clock</b>	sets alarm clock function.
<b>Phone book</b>	stores phone numbers.
<b>Settings</b>	configures basic and advanced settings.



## NAVIGATION ICONS

The **Key area** powers down after use. To light up the icons, tap the area.

Tap the  and  icons to select **Menu** options.

Tap  icon to confirm your selection (before changing its settings). Also tap this icon to open or display an option.

Use left and right   and up and down arrow   icons to skip between fields or images.

 when in **Settings** or **File Manager**, this will open a context sensitive menu with more options for these two selections.

 changes orientation of the displayed image, from vertical to horizontal. Also tap this icon to return to previous choice or screen.



## SEND PHOTOS FROM YOUR MOBILE PHONE

Piix's phone number is listed on your **iiNet mobile** Welcome letter under **Mobile number**.

Use the **Message** option on your mobile phone with the photo as an attachment. Sending a picture (jpeg) from your mobile phone to the device will take under one minute to receive.

## SELECT PHOTOS TO DISPLAY IN SLIDESHOW

Tap  in the **Navigation Key Area**.

Scroll down to and select **File Manager** from the **Home** menu.

The **All Files** folder is highlighted by default.

Open the folder by tapping **OK**

### TO CHOOSE IMAGES:

Tap 

Scroll to **Multi-select** and press OK (green ticks appear on the right corner of each image.).

Use the arrow icons to highlight and OK each image you choose.

### TO HIDE IMAGES:

Use the arrow icons to select to the first image you want to **Hide**.

Tap 

Select **Hide**.

Repeat above steps for the other pictures you want to hide.

### TO UN-HIDE IMAGES:

Select the first image you want to un-hide.

Tap 

Select **Show**.

Repeat above steps for the other pictures you want to un-hide.



## CHANGE PHOTO ORIENTATION

If a vertical photo appears horizontally, you can change its orientation.


Select **Slideshow** from the  menu and tap the **OK** icon.

Tap  to skip to the image you want to re-orient.

Tap  several times until the image rotates to the position you want.

## CUSTOMISE SLIDESHOW EFFECTS

### TO SELECT SLIDESHOW SETTING OPTIONS

Select Slideshow from the  menu. Tap **OK**


Tap  and select **Slideshow Settings**.

Use arrow icons to select the setting you want and tap **OK**

### TO VIEW SLIDESHOW SETTING OPTIONS

You can also view each slideshow setting by using the up down  icons while in the middle of the default slide show.

### TO VIEW IMAGES IN CURRENT SLIDESHOW

Use the left right  arrow icons to skip through the slideshow images while in the middle of a slideshow (this function is useful if you want to quickly check what images are included in your current slideshow).

## CHANGE SLIDESHOW DISPLAY STYLE

Select **Slideshow** from the  menu. Tap **OK**

Tap either one of the  arrows to scroll between the available display options.



## DELETE A PHOTO

Select **File Manager** from the  menu. Tap **OK**

Select folder.

Tap  to select the image.

Tap  (for context sensitive menu) and select **Delete**.

## SET DATE AND TIME

Scroll down the  menu until you get to **Settings**.

Select **Basic Settings**.

Select **Date & Time**. Tap **OK**

Make your selections using the arrow icons.

When you switch off the device at the power source, the date settings will reset.

To keep your date settings, keep the device on and let the **movement detection sensor** power down the device.

## UPDATE THE DIGITAL PHOTO FRAME

Go to **Settings** from the  Menu.

Select **Advanced Settings**.

Select **Upgrade Over the Air**.





# Appendix

## FAQs

### **WHY DO I SOMETIMES HAVE TO WAIT A LONG TIME BEFORE AN IMAGE IS DISPLAYED?**

If the image resolution is high or the file is large, it takes time for the device to process the image.

### **SOME IMAGES CAN BE DISPLAYED PROPERLY ON A COMPUTER BUT CANNOT BE VIEWED ON THE PHOTO FRAME, WHY?**

The problem may result from the image format. The photo frame supports images in JPEG, PNG, BMP, and GIF formats only.

### **WHY WON'T THE DEVICE PLAY MY MOVIE FILE?**

The device does not support the .mov format, which are video files from some smartphones.

### **WHY DO SOME IMAGES APPEAR SHARPER THAN OTHERS?**

It depends on the mobile phone you are sending from. HTC phones compress all images automatically before they are sent, at a resolution of 3264 x 1952 px. This is a default that can't be changed. Blackberry phones do not compress images before they are sent so will look sharper on the device screen.

### **WHY ARE SOME OF MY IMAGES CROPPED WITH A BLACK BORDER BUT OTHERS FILL THE SCREEN?**

This is due to different default image aspect ratios from some phones. For example, HTC phone's landscape images fit the entire screen whereas the Blackberry landscape images have a black border on the sides.



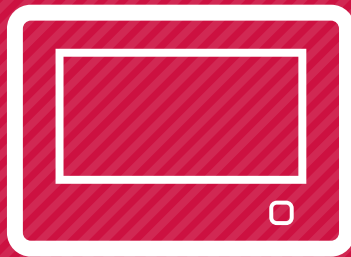
## Technical Specifications

<b>LCD</b>	9-inch color TFT LCD
<b>LCD resolution</b>	800 x 480 pixels
<b>Image formats</b>	JPEG, PNG, BMP, and GIF
<b>Audio formats</b>	AMR-NB(.3gp .amr).AMR-WB(.3gp .amr), AAC(.3gp .mp4 .m4a .3g2), AAC+, eAAC+, PCM(.wav), MIDI(.mid .rtttl .rtx .ota .imy), Ogg Vorbis(.ogg)
<b>Video formats</b>	MPEG4(.mp4 .3gp .3g2), H.264(.3gp .mp4 .3g2), H.263(.3gp .3g2)
<b>Internal memory</b>	Approx. 3 GB
<b>SD/SDHC card</b>	Up to 32 GB
<b>Ambient temperature for operation</b>	0°C to 40°C (32°F to 104°F)
<b>Relative humidity for operation</b>	10% to 80%, non-condensing
<b>Dimensions (H x W x D)</b>	Approx. 155 mm x 239 mm x 23mm (excluding support)
<b>Power adapter input</b>	100 V-240V AC, 50 to 60 Hz
<b>Power adapter output</b>	5 V DC, 2 A
<b>Power consumption</b>	<10 W
<b>Weight</b>	Approx. 570 g



This page has been left intentionally blank





**piix**  
Quick Start Guide

To contact our friendly support staff ring:

**iiNet**  
13 22 58

**Westnet**  
1300 786 068

**Internode**  
13 66 33

**Transact**  
13 30 61

**iiinet**  
connect better